

*The Snow Brakes Line of
Clear Polycarbonate Snow Guards
for Metal Roofing Introduces*

"The Mini"

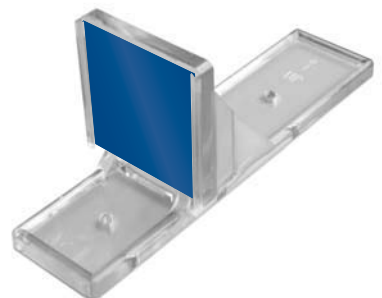


RTMINI

*Superior Protection with an
Out-Of-Sight Look!*

RTMINI CLEAR SNOW BRAKE FEATURES:

- Premium quality high clarity polycarbonate plastic
- Economical value with maximum protection
- Low visibility to blend with roof materials
- UV stabilized for strength and longevity
- 4.5" square inch holding area
- 2:1 base to blade ratio
- 1.5" wide base to fit parapet ribbed roof channels
- Gusseted blade snow pocket retains snow
- Perimeter ribbing for longitudinal reinforcement
- Attachment with SB-190 adhesive, screws or VHB Tape
- 3 cored screw holes for mechanical attachment
- Radius blade corners for safety
- Forward blade position designed to resist torsional loads
- Multi-directional tangential gussets resist lateral loads
- Blade "Snowflake" slots accept custom emblem or color chip
- For VHB Tape attachment and for FREE custom layout service, please call



*RTMINI shown with
"Snowflake" slot filled
with color chip*